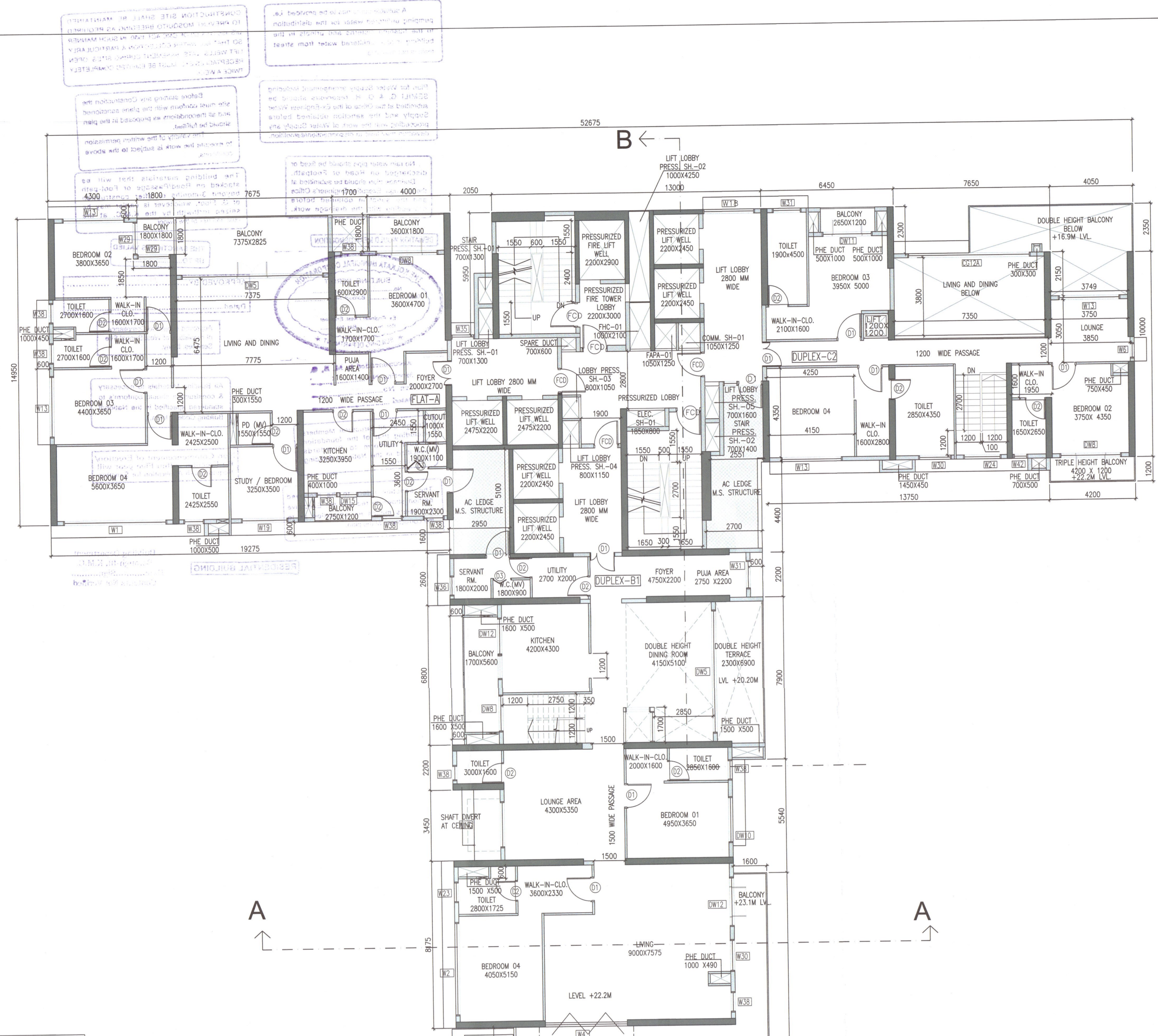




PARTY'S COPY



WINDOW SCHEDULE--

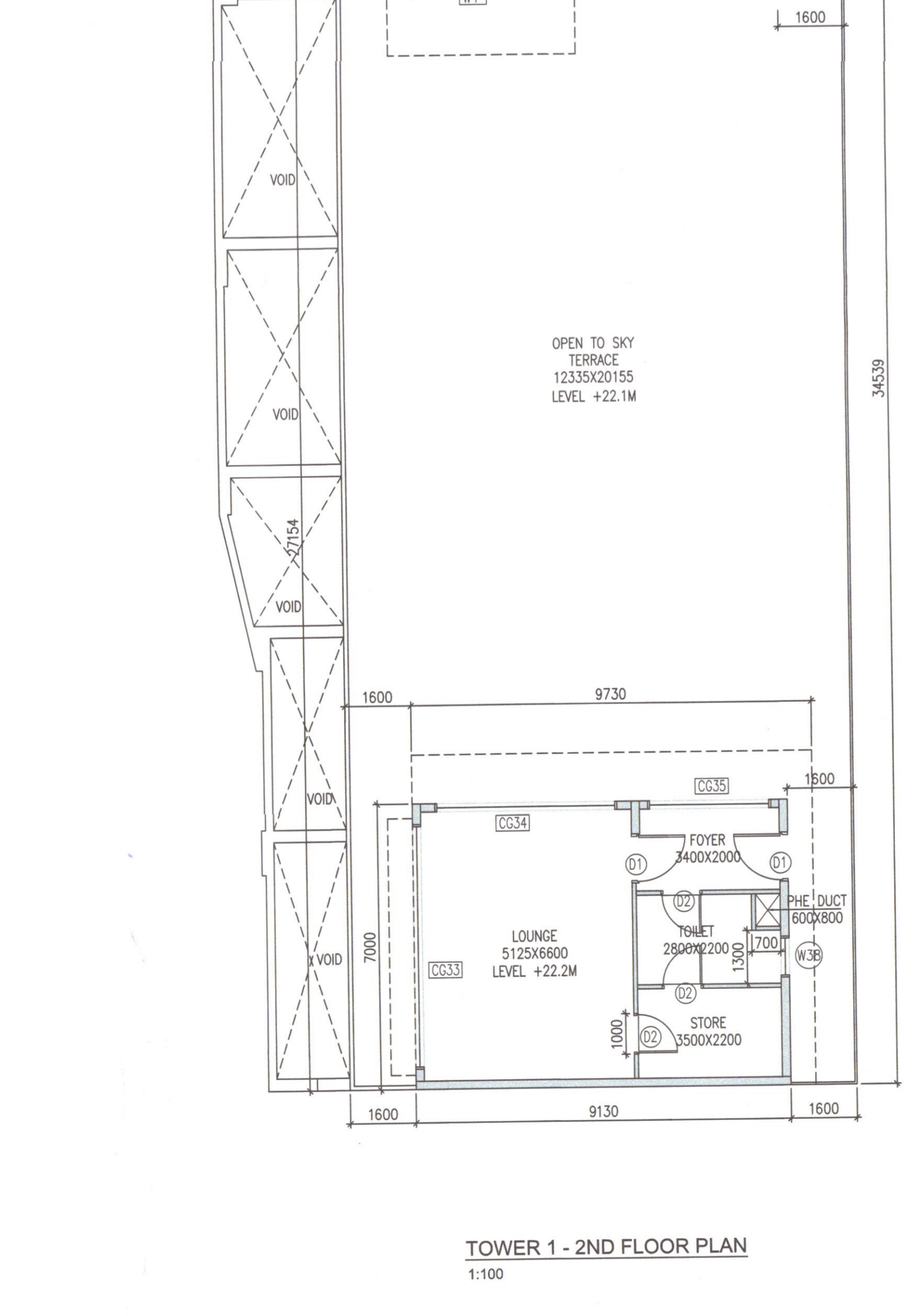
MARKING	SILL	LINTEL	SIZE
W	300	2550	7150X2550
W1	300	2550	5000X2550
W2	300	2550	5250X2550
W2A	300	2550	4400X2550
W3	300	2550	4325X2550
W4	300	2550	3950X2550
W5	300	2550	3900X2550
W6	300	2550	3850X2550
W7	300	2550	3650X2550
W8	300	2550	3600X2550
W9	300	2550	3500X2550
W10	300	2550	3350X2550
W11	300	2550	3225X2550
W12	300	2550	3050X2550
W13	300	2550	3000X2550
W14	300	2550	2900X2550
W15	300	2550	2800X2550
W16	300	2550	2750X2550
W17	300	2550	2650X2550
W18	300	2550	2400X2550
W19	300	2550	2250X2550
W20	300	2550	2050X2550
W21	300	2550	2000X2550
W22	300	2550	1875X2550
W23	300	2550	1825X2550
W24	300	2550	1800X2550
W25	300	2550	1700X2550
W26	300	2550	1675X2550
W27	300	2550	1650X2550
W28	300	2550	1625X2550
W29	300	2550	1600X2550
W30	300	2550	1550X2550
W31	300	2550	1400X2550
W32	300	2550	1325X2550
W33	300	2550	1300X2550
W34	300	2550	1225X2550
W35	300	2550	1150X2550
W36	300	2550	1120X2550
W37	300	2550	1100X2550
W38	300	2550	1000X2550
W39	300	2550	900X2550
W40	300	2550	800X2550
W41	300	2550	750X2550
W42	300	2550	700X2550

WINDOW SCHEDULE--

MARKING	SILL	LINTEL	SIZE
F.G.2	-	2550	1150X2550
CG2A	-	2550	1580X2550
CG2	-	2550	1580X2550
CG3A	-	2550	1340X2550
CG3	-	2550	12725X2550
CG4	-	2550	11630X2550
CG4A	-	2550	11400X2550
CG5	-	2550	11200X2550
CG6	-	2550	8600X2550
CG7	-	2550	8425X2550
CG8A	-	2550	7775X2550
CG8	-	2550	7775X2550
CG9	-	2550	7450X2550
CG10	-	2550	7175X2550
CG11	-	2550	6500X2550
CG12	-	2550	6225X2550
CG12A	-	2550	6050X2550
CG13	-	2550	5975X2550
CG14	-	2550	5875X2550
CG15	-	2550	5750X2550
CG16	-	2550	5350X2550
CG17	-	2550	5300X2550
CG18	-	2550	5250X2550
CG19	-	2550	5100X2550
CG19A	-	2550	4800X2550
CG20	-	2550	4700X2550
CG21	-	2550	4525X2550
CG22	-	2550	4250X2550
CG23	-	2550	4050X2550
CG24	-	2550	3950X2550
CG25	-	2550	3550X2550
CG26	-	2550	3500X2550
CG27	-	2550	3150X2550
CG28	-	2550	2800X2550
CG29	-	2550	2000X2550
CG29A	-	2550	1800X2550
CG30	-	2550	1600X2550
CG31	-	2550	1500X2550
CG32	-	2550	1400X2550
CG33	-	2550	1225X2550
CG34	-	2550	1150X2550
CG35	-	2550	1120X2550
CG37	-	2550	4105X2550
CG38	-	2550	1300X2550
CG39	-	2550	1225X2550
CG40	-	2550	7575X2550
CG50	-	2550	3450X2550
CG51	-	2550	1925X2550

DOOR SCHEDULE--

MARKING	SILL	LINTEL	SIZE
DA	-	2400	1500X2400
DB	-	2400	1800X2400
DC	-	2400	2000X2400
DD	-	2400	1200X2400
DE	-	2400	1000X2400
DF	-	2400	900X2400
DG	-	2400	750X2400
DH	-	2400	700X2400
DI	-	2550	5350X2550
DJ	-	2550	1200X2550
DK	-	2550	7500X2550
DL	-	2550	7450X2550
DM	-	2550	7350X2550
DN	-	2550	7150X2550
DO	-	2550	3950X2550
DP	-	2550	3850X2550
DQ	-	2550	3500X2550
DR	-	2550	3500X2550
DS	-	2550	3500X2550
DT	-	2550	3500X2550
DU	-	2550	3500X2550
DV	-	2550	3500X2550
DW	-	2550	3500X2550
DX	-	2550	3500X2550
DY	-	2550	3500X2550
DZ	-	2550	3500X2550
DA1	-	2550	3500X2550
DA2	-	2550	3500X2550
DA3	-	2550	3500X2550
DA4	-	2550	3500X2550
DA5	-	2550	3500X2550
DA6	-	2550	3500X2550
DA7	-	2550	3500X2550
DA8	-	2550	3500X2550
DA9	-	2550	3500X2550
DA10	-	2550	3500X2550
DA11	-	2550	3500X2550
DA12	-	2550	3500X2550
DA13	-	2550	3500X2550
DA14	-	2550	3500X2550
DA15	-	2550	3500X2550
DWA	-	2550	6000X2550



GENERAL NOTES

- ALL DIMENSIONS ARE IN MM.
- ALL EXTERNAL WALLS 200THK. & INTERNAL WALLS 100THK. UNLESS OTHERWISE MENTIONED.
- ALL MASONRY WORKS ARE DONE BY CEMENT MORTAR (1:6) & (1:4).
- EXTERNAL PLASTER IS 25 THK. & INTERNAL PLASTER IS 12MM THK. WITH 1:4 MORTAR.
- ALL CONC. GRADE IS M20 (1:1.5:3).

CERTIFICATE OF GEO-TECHNICAL ENGINEER

IT IS CERTIFIED THAT THE COMPREHENSIVE GEO-TECHNICAL REPORT ON SOIL INVESTIGATION HAS BEEN PREPARED BY ME FOR DESIGN AND CALCULATION OF THE FOUNDATION BY ANALYSING THE SOIL SAMPLE FOR ESTIMATING THE BEARING CAPACITY OF THE SOIL ON WHICH FOUNDATION OF THE STRUCTURE WILL BE CONSTRUCTED.

I SHALL ALSO CHECK THE NATURE OF THE SOIL AFTER EXCAVATION AT SITE SO THAT FOUNDATION IS EXTENDED UP TO APPROPRIATE DEPTH THAT HAS BEEN PROPOSED IN THE GEO-TECHNICAL REPORT.

DR. SUJIT KUMAR BOSE
Ph.D., M.C. (Geotech.), M.S. (MIS), M.S. (MIS), M.S. (MIS)
Empanelled Geotechnical Engineer Under KMC License No.- 07/1/12

CERTIFICATE OF OWNER

- I ENGAGED ARCHITECT AND E.S.E DURING CONSTRUCTION.
- I FOLLOWED THE INSTRUCTIONS OF ARCHITECT AND E.S.E DURING CONSTRUCTION OF THE BUILDING.
- K.M.C AUTHORITY WILL NOT BE RESPONSIBLE FOR STRUCTURE STABILITY OF BUILDING AND ADJOINING STRUCTURE.
- IF ANY SUBMITTED DOCUMENT IS FOUND TO BE FAKE THE K.M.C AUTHORITY MAY REVOKE THE SANCTION PLAN.
- THE CONSTRUCTION OF WATER RESERVOIR AND SEPTIC TANK EXECUTED UNDER THE GUIDANCE OF ARCHITECT & E.S.E.

SOURAV GIRI
Authorized Signatory of
Ms. Sunidhi Estates Pvt. Ltd.
Director
Mr. Ashish Kumar Gonenka &
Mr. Varun Coghra
For As Consultant Attorney of:
Ms. Vivek Build Industries Pvt. Ltd.
Ms. Mechano International Pvt. Ltd.
Ms. Utsav Developers Pvt. Ltd. &
Ms. Eternity Properties Pvt. Ltd.

Mr. Varun Gonenka
150, Bonpar Avenue, Block - C,
P.S. Lake Town, Kolkata 700055

CERTIFICATE OF STRUCTURAL ENGINEER

CERTIFIED THAT THE STRUCTURAL DESIGN & DRAWINGS OF BOTH FOUNDATION & SUPER STRUCTURE OF THE BUILDING HAS BEEN MADE BY ME CONSIDERING ALL POSSIBLE LOADS INCLUDING THE SEISMIC LOAD AS PER THE NATIONAL BUILDING CODE OF INDIA & CERTIFIED THAT IT IS SAFE & STABLE IN ALL RESPECTS.

MS. MITA SAHA
M.E., M.E. (Struct.), C.E.
Structural Reviewer- 92/23 (KMC)

Mr. Chinar Sharma
Ms. Mita Saha
M.E., M.E. (Struct.), C.E.
Structural Reviewer- 92/23 (KMC)

CERTIFICATE OF ARCHITECT

THE L.B.A. HAS CERTIFIED ON THE PLAN ITSELF WITH FULL RESPONSIBILITY THAT THE BUILDING PLAN HAS BEEN DRAWN UP AS PER PROVISION OF K.M.C. B.O.D. RULES 2009, AS AMENDED FROM TIME TO TIME AND THAT THE SITE CONDITION INCLUDING THE WIDTH OF THE ABUTTING ROAD CONFORM WITH THE PLAN AND IT IS A BUILDABLE SITE AND NOT A TANK OR A FILLED UP TANK.

MANABJIT KUMAR SINGHA ROY
Registered Architect
Regd. No. CA/2011/54291

TITLE

TOWER 1 - 2ND FLOOR PLAN

PROJECT

PROPOSED PLAN FOR ADDITIONAL 2 NOS. OF RESIDENTIAL TOWER-1 & 2 (G+28) STORED (96.1 M HEIGHT), 1 NO. OF BUNGALOW (G+8) STORED (38M HEIGHT), 1 NO. OF VILLA (G+3) STORED (15.15M HEIGHT) BUILDING WITH 1 NO. OF (G+3) STORED (12.45M HEIGHT) OFFICE BUILDING UNDER SECTION 394 OF KMC ACT 1980, COMPLYING KMC BUILDING RULES 2009 (AMENDED), ALONG WITH THE SANCTIONED (G+33) STORED (113M HEIGHT) RESIDENTIAL BUILDING AT PREMISES NO. 47, (PREMISES NO. 53A, 53B, 67, 67/1C, 54A & 47, LAND AMALGAMATED ON DATED 09.02.2024) CANAL CIRCULAR ROAD, WARD NO.-031, KOLKATA MUNICIPAL CORPORATION.

VIDE SANCTION B.P. NO. 2017030061, DATED. 15.12.2017.

DRAWN BY: A.S.
SCALE: 1:100
DATE: 10.09.2025

DEALT BY: M.S.R.

